



INSTALLATION, OPERATION AND MAINTENANCE INSTRUCTIONS

PATCH PANEL (RETRO-FIT) KIT FOR LE484 LED LIGHT FIXTURE SPRAY / PAINT BOOTH & CLEAN ROOM APPLICATIONS

WARNING!

1. TO PREVENT THE RISK OF ELECTRICAL SHOCK DEACTIVATE/DISCONNECT THE POWER SUPPLY BEFORE REMOVING ORIGINAL FIXTURE AND INSTALLING NEW KIT.
2. THE DRIVER IN THIS FIXTURE IS DESIGNED TO OPERATE ON GROUNDED NEUTRAL SYSTEMS ONLY.
3. THIS FIXTURE SHOULD BE INSTALLED BY QUALIFIED TECHNICIANS IN STRICT ACCORDANCE WITH THE NATIONAL ELECTRICAL CODE AND ANY LOCAL REQUIREMENTS.

PAINT SPRAY BOOTH APPLICATIONS

The fixture and retrofit panel should be sealed in such a way that only the face of the light fixture is exposed to the paint environment and the sides and rear are located in the Class I Division 2 environment.

DISCLAIMER

This is a Retro-Fit Kit! Customer may be required to use additional fasteners for install to help seal kit and ensure that ratings remain intact.

- If fixture has a special suffix (Sxxx) at the end of nomenclature, please consult factory for cutout and panel sizes.
- Additional cutting and drilling will be required if replacing any of the following fixtures 390241, 390420, or 390421.
- Additional drilling is required if replacing a 390440, 390441 fixtures.
- Fixture and patch panel must be caulked after install to guarantee a seal in the booth wall.

OPERATIONAL DATA

Operate this fixture at its rated voltage. See fixture label for data. Do not install where the marked operating temperature exceeds the ignition temperature of the hazardous atmospheres.

INSTALLATION

Each kit includes:

- Patch panel for specific light fixture
- Clip-on nuts (8) for installing LE484 to patch panel
- Bolts (8) for installing LE484

Customer requirements:

- Drill (5/16" Diameter)
- Fasteners
- Caulk (approved for use in booth applications)
- Metal cutting saw (for 241, 420, 421 Series Fixtures)

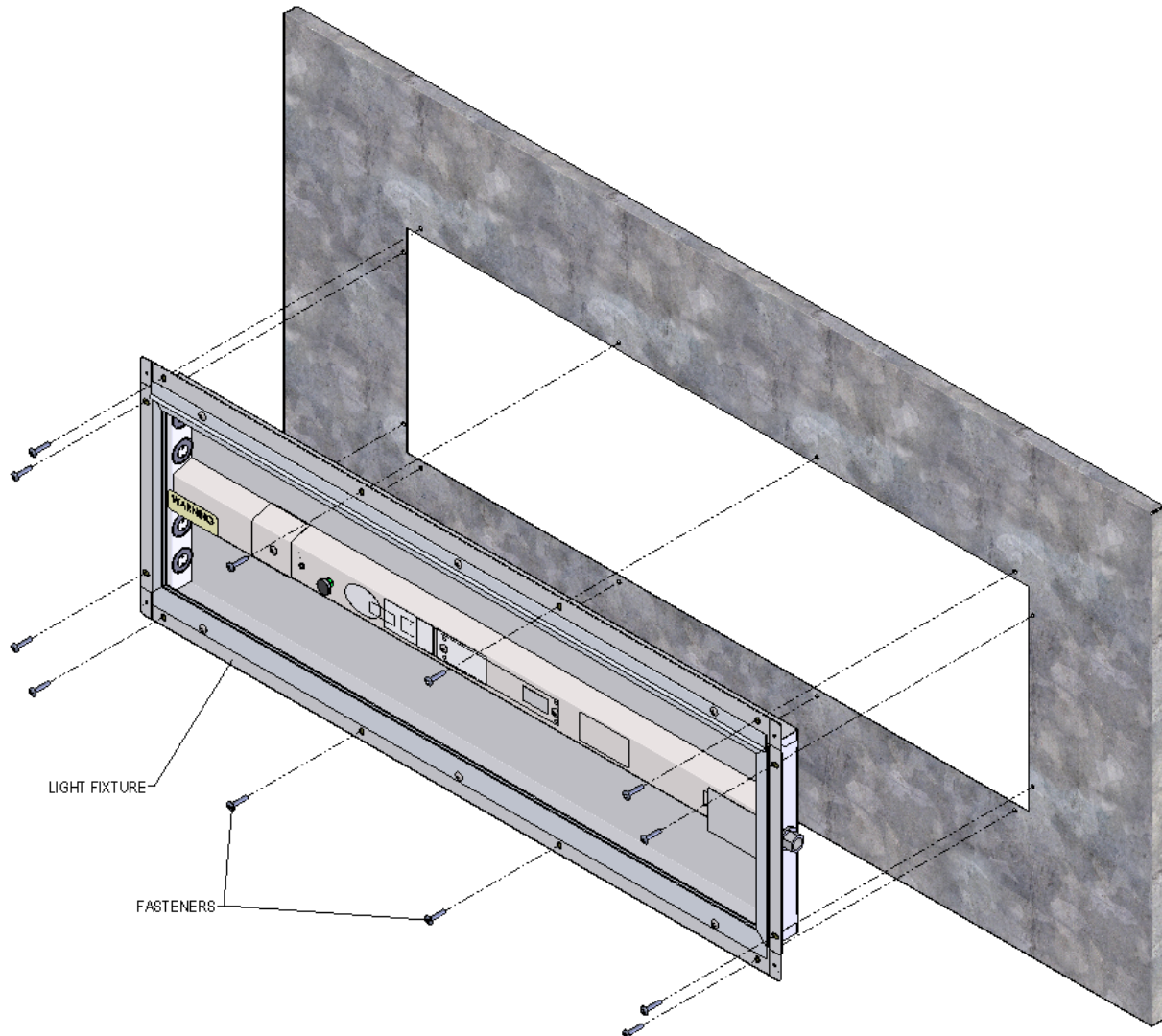
Current fixture	Patch Panel Kit
390440, 390441, 390241, 390420, 390421	17656
390260, 390261	17657
390460, 390461	17658

Before starting, make sure power is disconnected!

Step 1

Remove fasteners and existing light fixture.

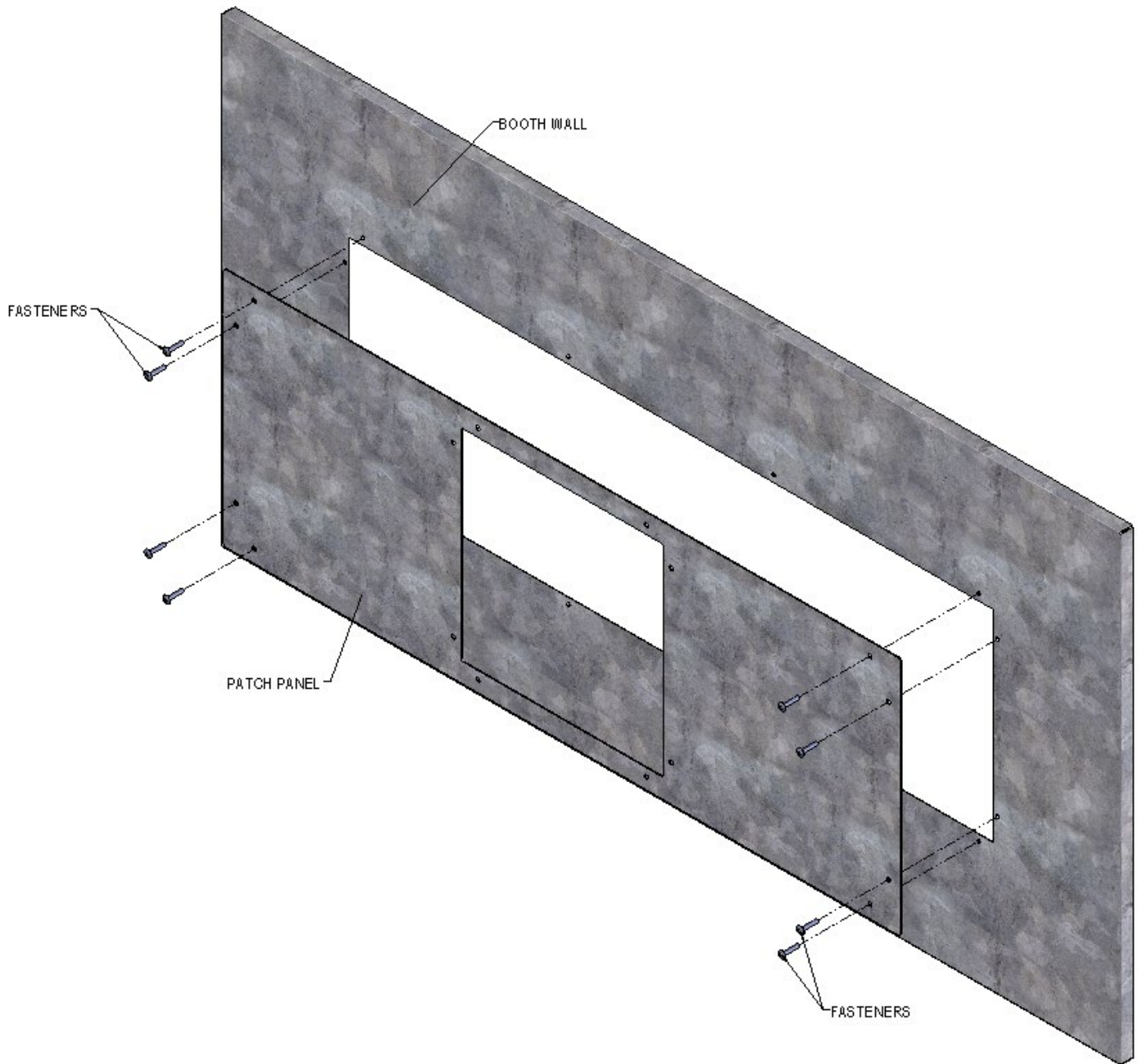
- Remove all fasteners from existing light fixture. **Keep fasteners**, they will be used later.
- Remove light fixture from booth wall.



Step 2

Install patch panel

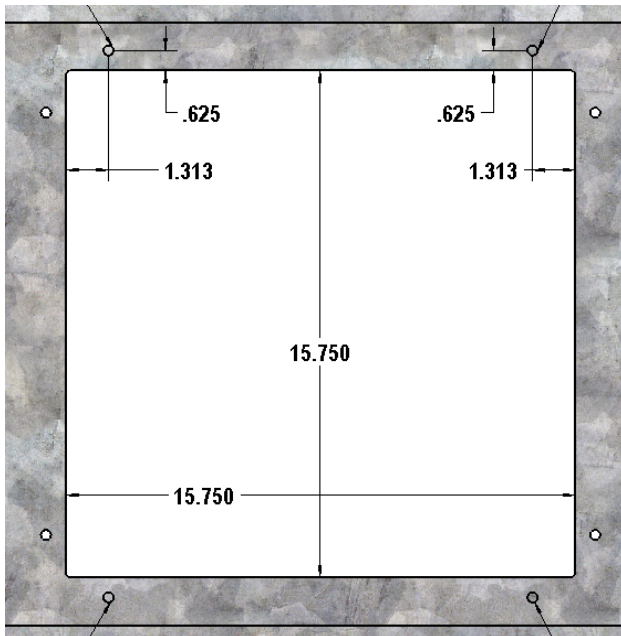
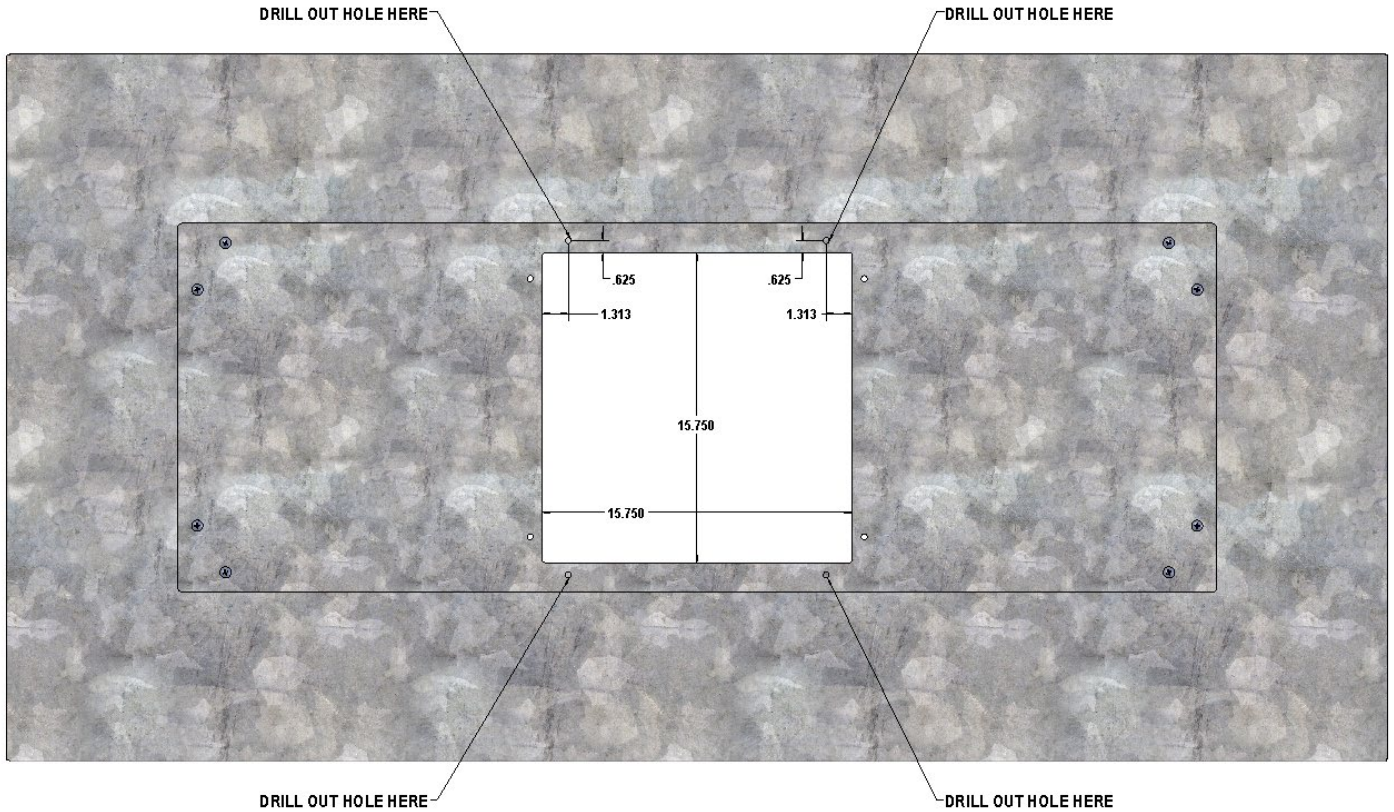
- Using fasteners from original light fixture, lightly secure patch panel to booth wall with 8 screws as shown below. Leave screws slightly loose so that caulk can be applied between patch panel and booth wall, see step 4.
- If replacing a 6 lamp fixture use all 12 screws to secure patch panel to booth wall.



Step 3

Drill out holes

- Skip step if replacing a 390460, 390461, 390260, 390261 fixtures.
- Use patch panel as a guide for hole locations, as shown below.
- If replacing any two lamp fixture the cutout for the LE484 will need to be enlarged and holes will need to be drilled - see dimensions below.

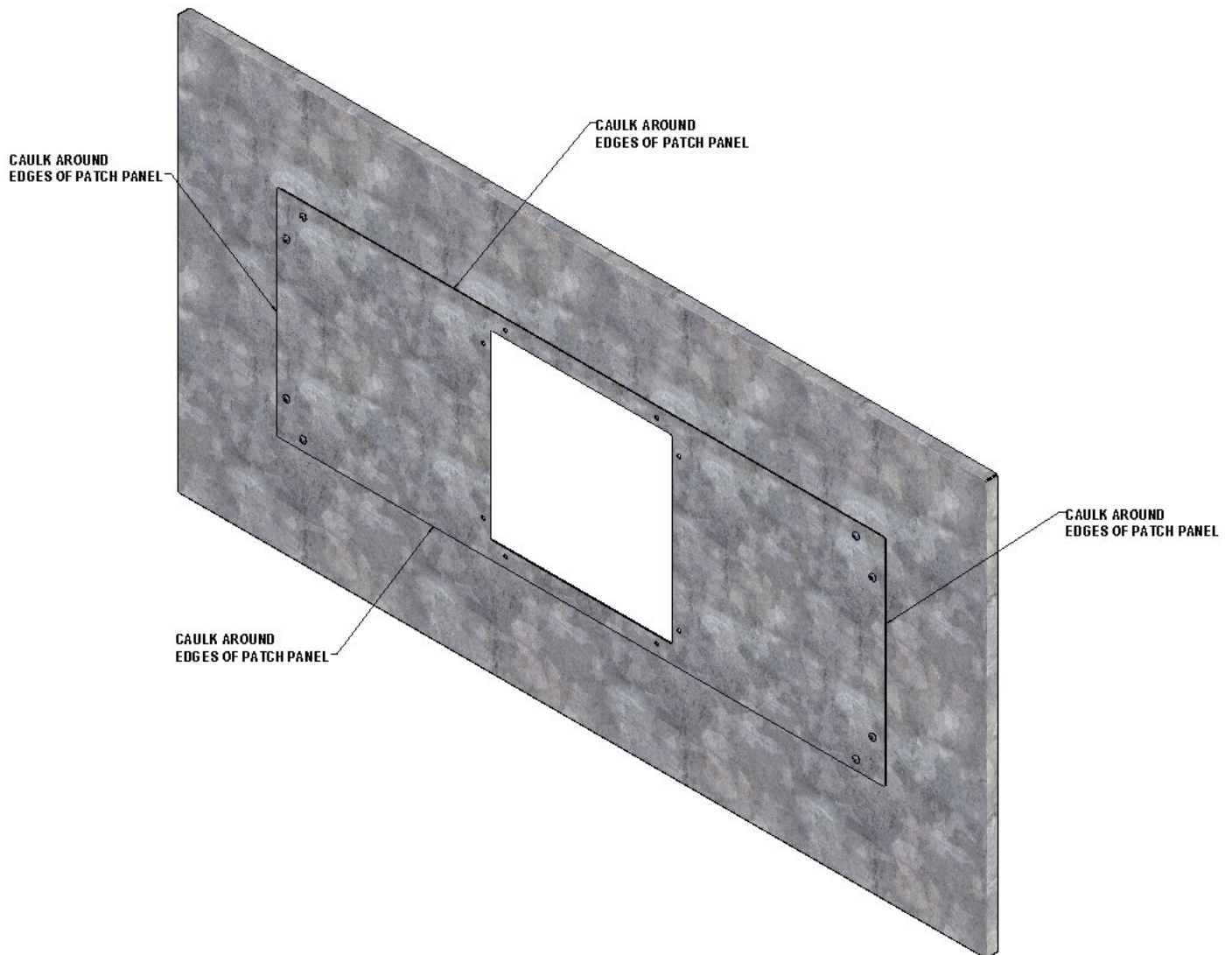


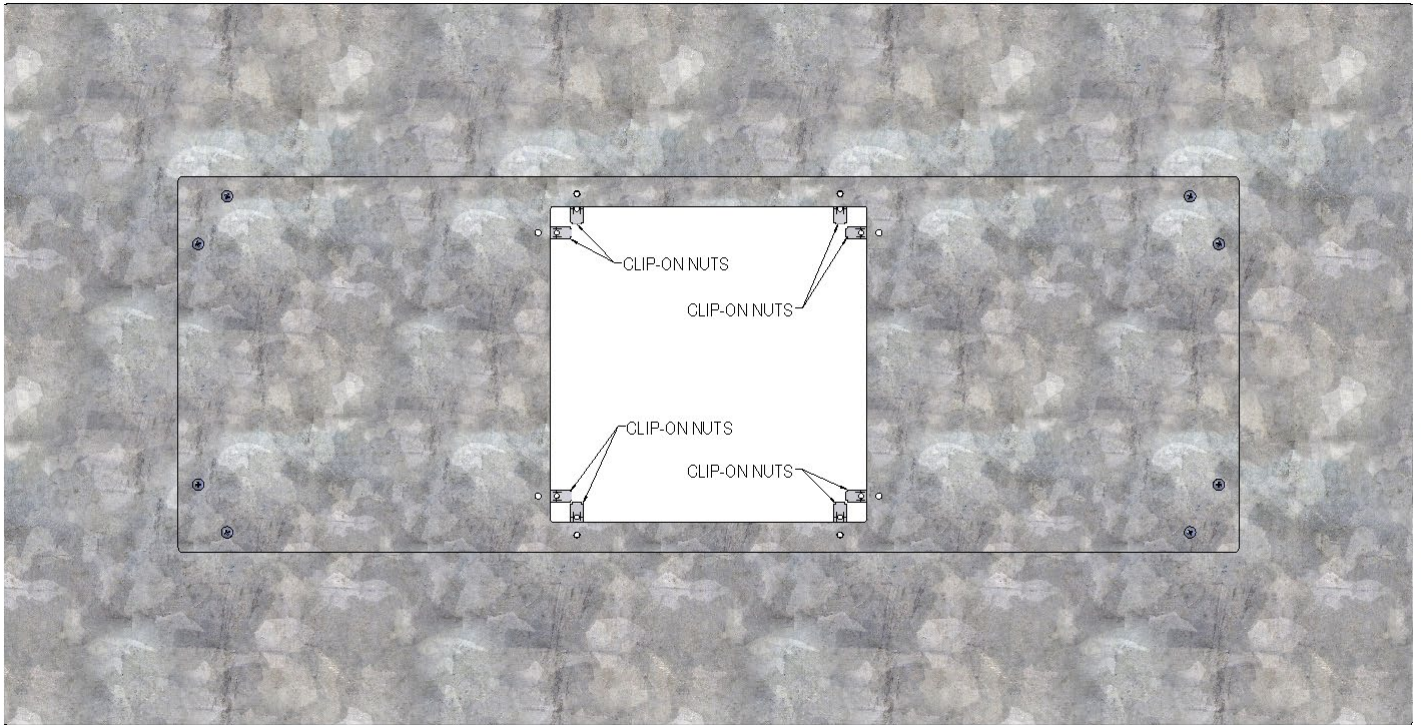
LE484 cutout and hole dimensions

Step 4

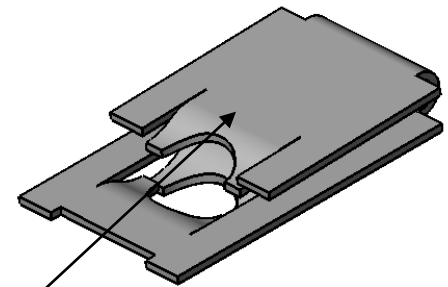
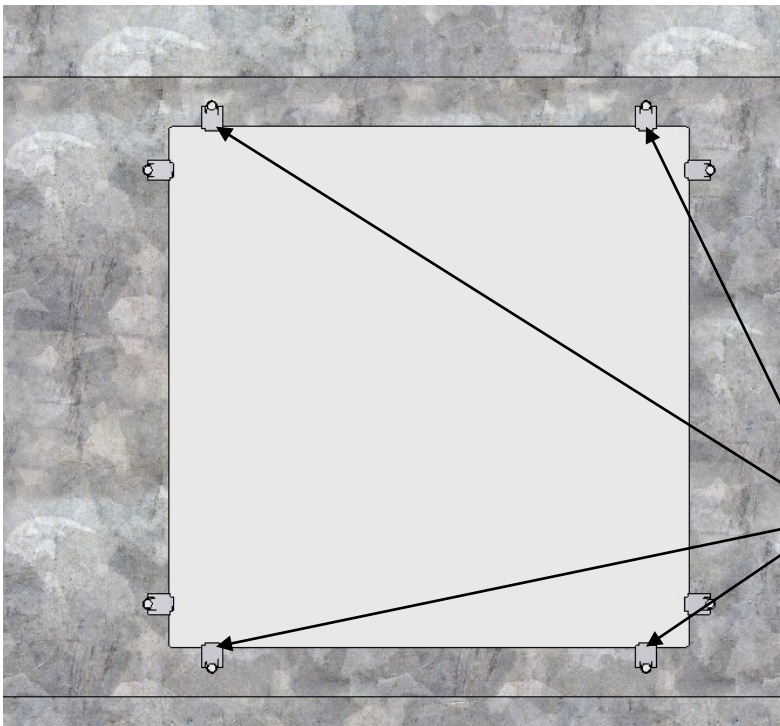
Secure panel and install clip-on nuts

- Once holes are drilled, make sure any metal shavings have been cleared away from the booth wall and patch panel.
- Make sure fasteners are not completely tight on patch panel.
- Caulk around all edges of patch panel so that caulk is between panel and booth wall, as shown below.
- Install clip-on nuts over panel in LE484 cutout so that they cover the holes, make sure clip-on nuts are secured in place.





Clip-on nuts installed below



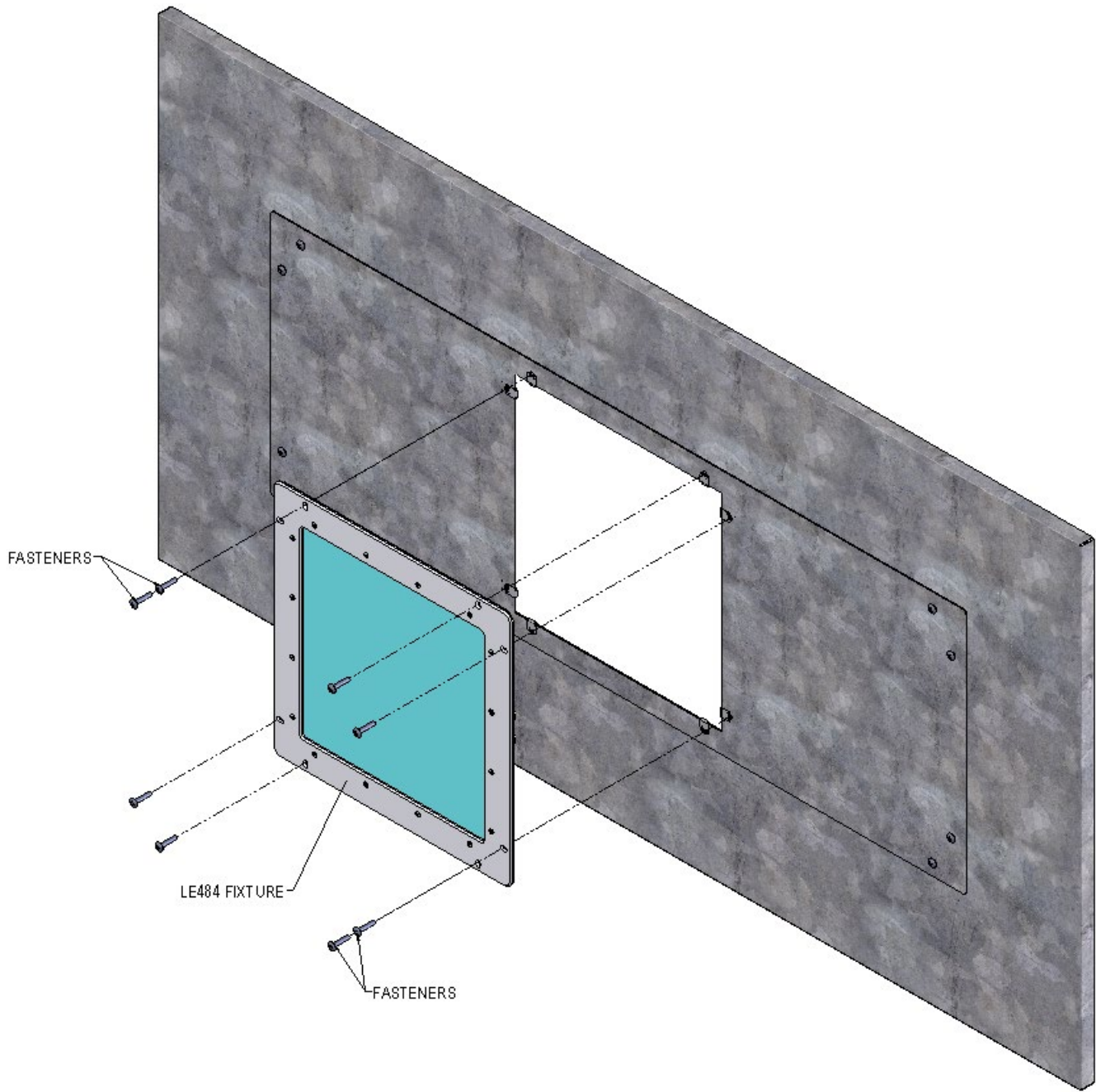
Short side of clip-on nut to face inside of booth

Clip-on nuts to go over both patch panel and booth wall

Step 5

Install LE484 fixture

- Connect power to fixture, must be connected by a qualified individual.
- Take all necessary safety precautions when connecting power to fixture.
- Fixture must be installed using conduit
- Using the bolts provided, install the fixture into the opening using clip-on nuts that were installed in previous step.
- Take care not to smear or contact the caulk during this step.



Step 6

Caulk fixture and panel

- Caulk around edges of fixture
- Caulk around edges of patch panel if any caulking was damaged while installing LE484 fixture.

