

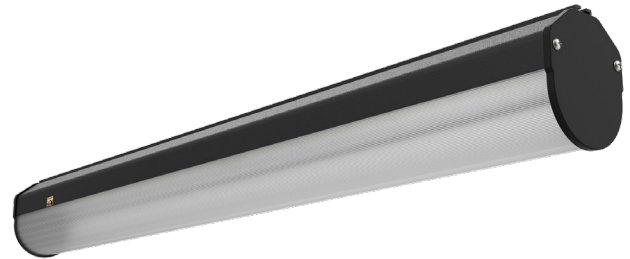


# LEINS2

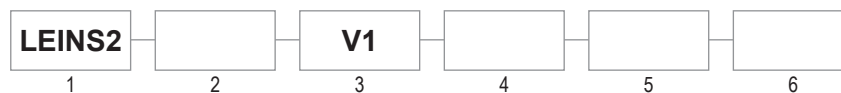
## LED INSPECTION LIGHTING

Paint Inspection • Plastic Inspection • Defect Detection

The LEINS2 is an LED Inspection lighting fixture that was specifically designed for focusing light in a particular direction for inspection and surface defect detection applications. This fixture is capable of saving 45% or more energy than the traditional fluorescent fixture, and has an excellent economic efficiency by greatly reducing maintenance costs while eliminating the need for handling and disposing of hazardous material.



Consult LDPI Sales for available NOM Certified Configurations



1 SERIES	2 SOURCE*	3 VOLTAGE	4 LENGTH	5 FINISH	6 OPTIONS
LEINS2	P8: 8W to 28W P13: 13W to 51W P21: 21W to 84W  *See performance table	V1: 120-277VAC (50/60Hz)	2: 2 Ft. 4: 4 Ft. 6: 6 Ft. 8: 8 Ft.	PB: Powder Coat Black (Standard) PW: Powder Coat White	C: Cord with Blunt End CP1: 6 Ft. Cord with 120V Twist Lock L5-15P Plug CP2: 6 Ft. Cord with 277V Twist Lock L7-15P Plug D2: 0-10V Dimming, (2) M12 Connectors as Standard* D3: DALI Dimming, (2) M12 Connectors as Standard* EM: Battery/Driver Backup (90 Min.)  *If dimming option is selected along with a cord and plug, separate dimming cables are required. Ordered separately.

### CERTIFICATIONS

UL1598 / CSA 22.2 No. 250.0 (Ordinary)  
 Lumen Maintenance (L70): >50,000 hrs. (reported)  
 -20°C to 50°C Ambient Rating  
 CRI >95 / R9

### CONSTRUCTION

Extruded aluminum housing  
 Extruded, frosted acrylic lens  
 Powder coat black finish (standard)  
 Weights: Length specific, see dimensions chart

### ELECTRICAL

120-277VAC  
 Dimming Options: 0-10V or DALI  
 Emergency, battery backup option available

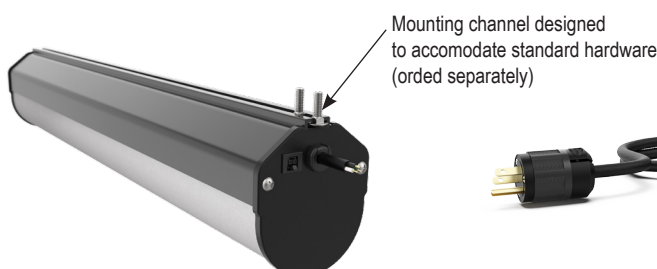
### FEATURES

5 Year Warranty  
 Mounting Options: Ceiling, Wall, Cable, Chain, Surface  
 (Mounting options ordered separately, field installed)  
 Lens designed for topographical defect detection  
 Powder coat special: Customer must specify RAL #  
 Anodized Black Finish (Minimum order quantities required)

### PERFORMANCE

Source	Length	Voltage (VAC) 50/60Hz	Input Current (A)	Wattage (W)	CCT	Lumen Output* (Lm)
P8	2 Ft.	120-277	0.07 - 0.03	8	5,000K	930
	4 Ft.		0.12 - 0.05	14		1860
	6 Ft.		0.19 - 0.08	22		2790
	8 Ft.		0.24 - 0.10	28		3720
P13	2 Ft.		0.11 - 0.05	13		1570
	4 Ft.		0.22 - 0.10	26		3140
	6 Ft.		0.33 - 0.15	39		4710
	8 Ft.		0.43 - 0.19	51		6280
P21	2 Ft.		0.18 - 0.08	21		2480
	4 Ft.		0.35 - 0.16	42		4960
	6 Ft.		0.53 - 0.24	63		7440
	8 Ft.		0.70 - 0.31	84		9920

\* Nominal values

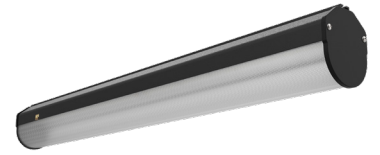


Fixture shown with 6 Ft. cord and plug and dimming options

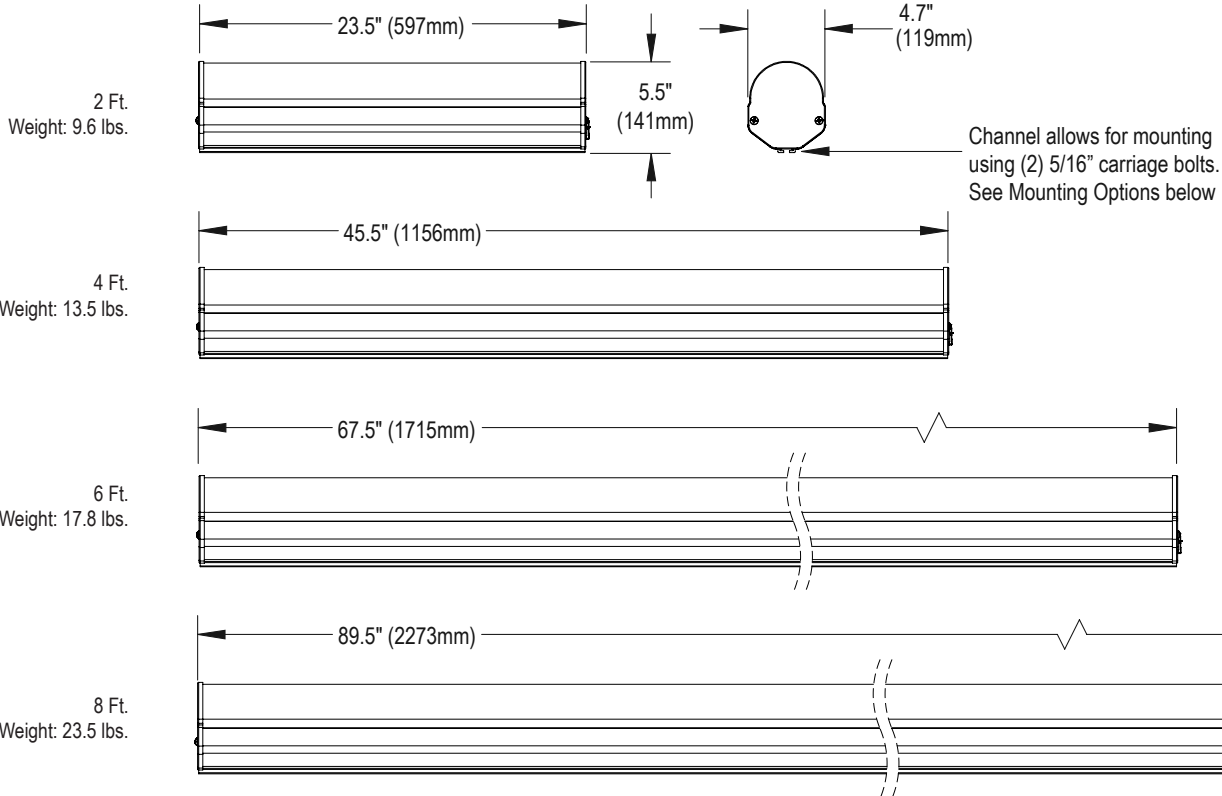
# LEINS2

## LED INSPECTION LIGHTING

Paint Inspection • Plastic Inspection • Defect Detection

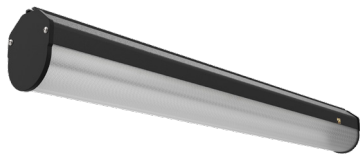


### DIMENSIONS



### MOUNTING (ORDERED SEPARATELY, FIELD INSTALLED)

Part #	Description		
18093	Direct Universal Mount Kit (2) 5/16-18 x 1" Carriage Bolt (2) 5/16" Flat Washer (2) 5/16" Lock Nut		
8170	Cable / Chain Kit Includes hardware and cable eyelets as shown.  Cable/chain not included		
8171	Ceiling / Wall Kit Includes hardware and brackets as shown.		
10568	Surface Kit Includes hardware and brackets as shown.		


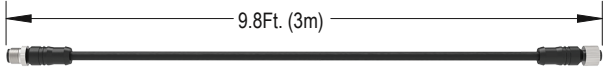
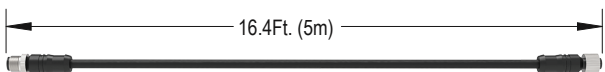
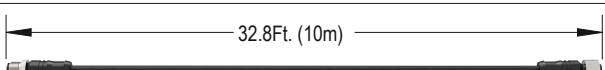
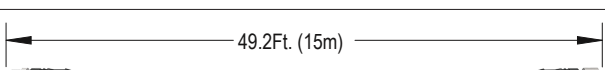


# LEINS2


## LED INSPECTION LIGHTING

Paint Inspection • Plastic Inspection • Defect Detection

### DIMMING CABLES (ORDERED SEPARATELY)

Dimming Cables (Required with D2 and D3 dimming options)			
Part #	Connector Type		Length (if applicable)
16350	M12 4-pin foil shield w/ drain male/female		
16349			
14772			
16348			

### ACCESSORIES AND APPLICATIONS

<p><b>Application</b></p> <p>Custom cart solutions for portable lighting solutions. Purchased separately. Consult sales with your requirements.</p>	
<p>Inspection tunnels for topographical defect detection. Custom controls options available. Ordered separately. Consult sales with your requirements.</p>	